

## Algebra 1 4.1

Write and graph linear equations in slope-intercept form.

Model data with equations in slope-intercept form

linear

slope

y-intercept

$y = mx + b$

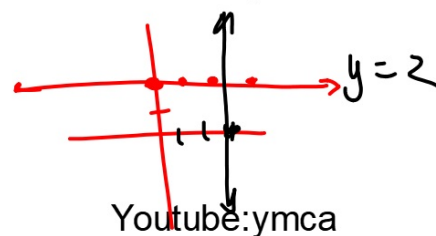
constant function (horizontal)

bicycles and constant slope

$$y = mx + b$$

$$y = 2$$

$$x = 3$$



Song

Whiteboards

### Guided Practice

$$y = mx + B$$

rate of change      start

5. **FUNDRAISERS** The band boosters are selling sandwiches for \$5 each. They bought \$1160 in ingredients.

A. Write an equation for the profit  $P$  made on  $n$  sandwiches.

B. Graph the equation.

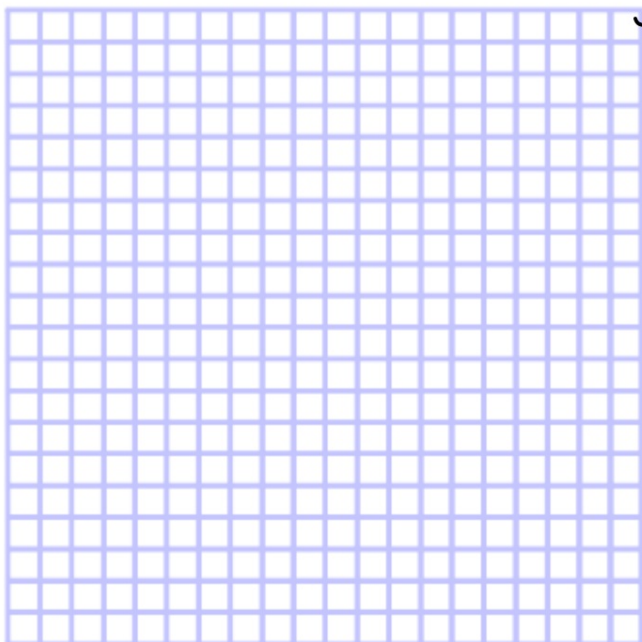
C. Find the total profit if 1400 sandwiches are sold.

$$y = 5x - 1160$$

$$y = 5 \cdot 1400 - 1160$$

$$y = \$5840$$

When do they make a profit?



---

4.1 ICE ws due today at end of day (work in class)