

Algebra 1 4.2

Write an equation of a line given a slope and a point

Write an equation of a line given two points

slope

y-intercept

linear equation

slope-intercept form  $y = mx + b$

constraints requirements

linear extrapolation prediction

activity: speed dating

## Whiteboards

Write the equation of the line:

b.  $(-4, -2)$  and  $(-5, -6)$

$$m = \frac{4}{1}$$

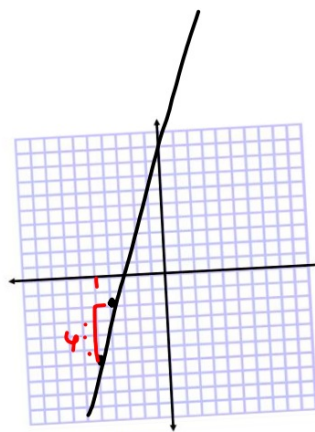
$$y = 4x + B$$

$$-2 = 4 \cdot -4 + B$$

$$-2 = -8 + B$$

$$+8 \quad +8$$

$$6 = B$$



$$y = 4x + 6$$

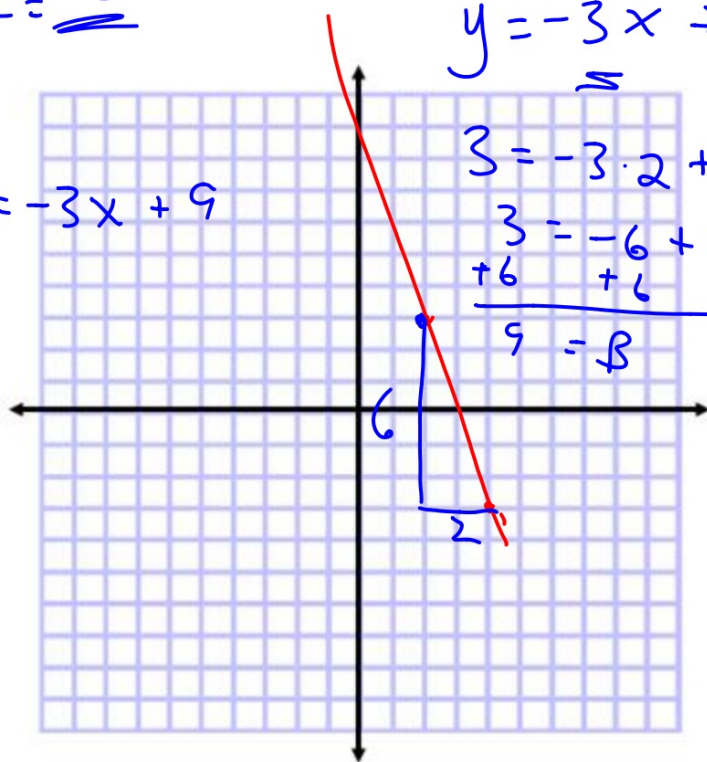
Write an equation of the line that passes through each pair of points.

5.  $(4, -3), (2, 3)$

6.  $(-7, -3), (-3, 5)$

$$-\frac{6}{2} = \underline{\underline{-3}}$$

$$y = -3x + 9$$



$$y = -3x + B$$

$$3 = -3 \cdot 2 + B$$

$$\begin{array}{r} 3 = -6 + B \\ +6 \quad +6 \\ \hline 9 = B \end{array}$$

## Speed dating

1. Solve your problem.
2. Check with me.
3. You are now the expert on this problem.
4. Wait for instructions.

