

### Trig 3.6

max min

Find the extrema of a function

critical point (value, numbers)

max/min/infl.  
tan horiz tan vert.

maximum

(absolute, relative)

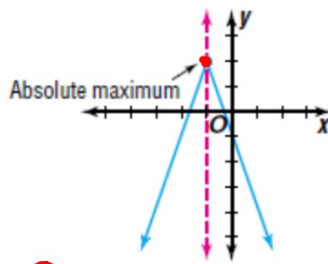
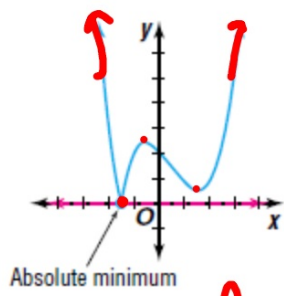
minimum

(absolute, relative)

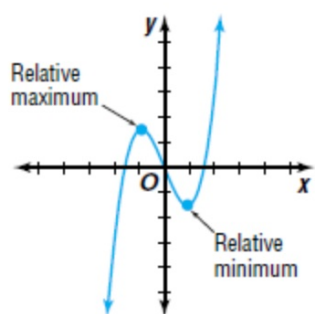
inflection point

extrema (extremum)

X-coordinate



local min }  
rel. min }



Use a graphing calculator to graph each function and to determine and classify its extrema.

6.  $f(x) = 2x^5 - 5x^4$

7.  $g(x) = x^4 + 3x^3 - 2$

Table... y-coords.  
max/min/abs/rel  
inflec pt: only if they ask

Quiz Mon. 3.5-3.6