

Trig 6.6

Model data using sine and cosine functions
Use sinusoidal functions to solve problems

period

amplitude

midline (vertical translation)

phase shift (horizontal translation)

sinusoidal

model



PS = -2
↑
left

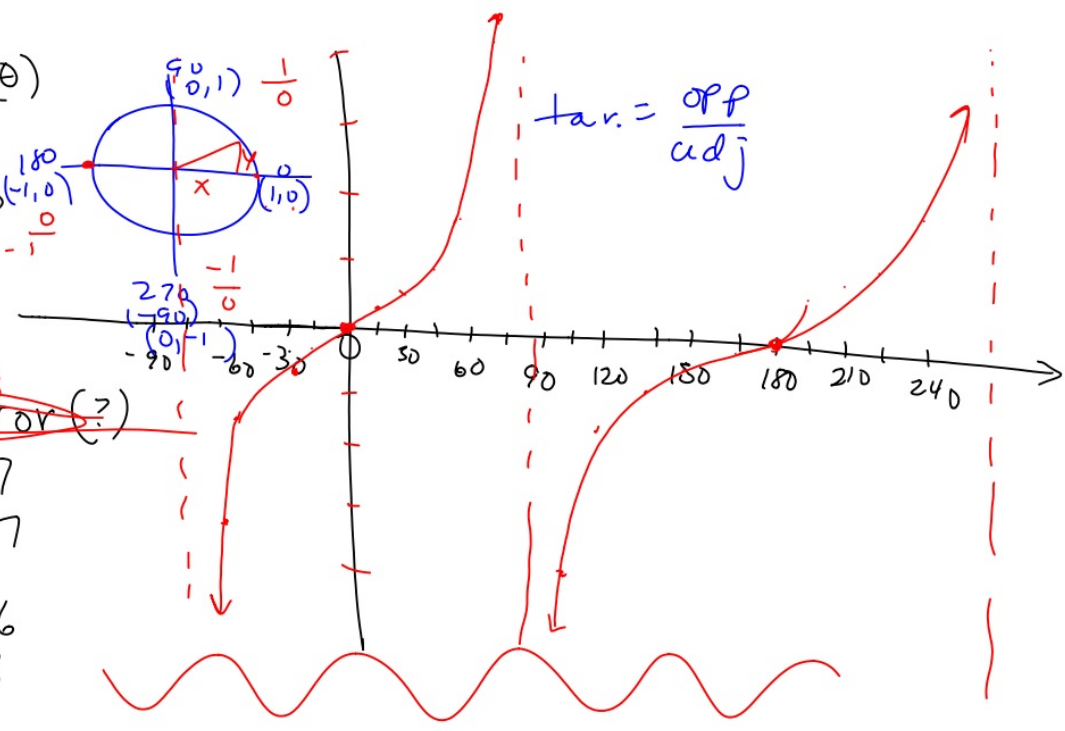
$$(\theta - 2)$$
$$(\theta + 2)$$

Quiz 6.5-6.6 Mon.

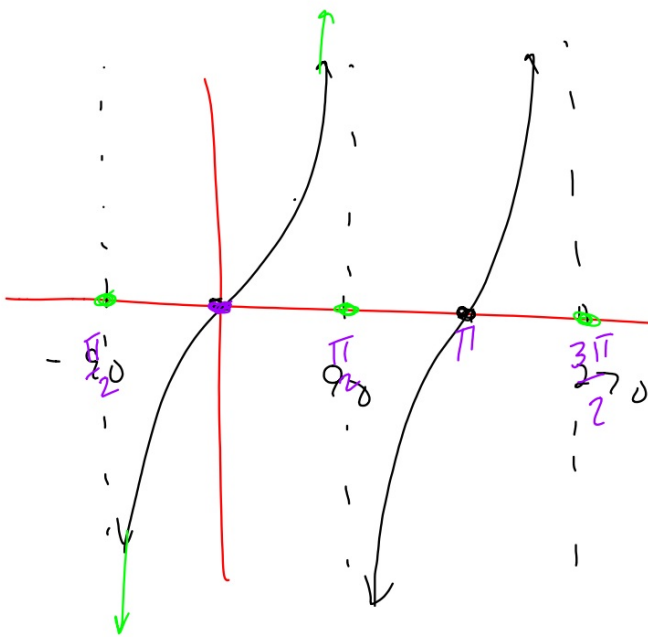
graphing calculators

Graph tan(x)

θ	$\tan(\theta)$
0	0
15	0.3
30	.6
45	1
75	3.7
60	1.8
89	5.73
90	error (?)
105	-3.7
120	-1.7
135	-1
150	-.6
165	-.3
180	0
195	.3
210	.6
225	1
240	1.7



$\tan = \frac{\text{opp}}{\text{adj}}$



$y = \tan x$
 not contin.
 period = π

