

Algebra 2 2.8

*Algebra 1

Graph linear inequalities*

Graph absolute value inequalities

linear function

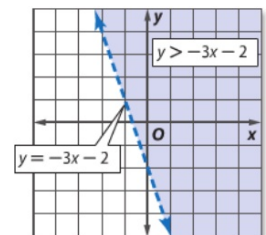
absolute value function

inequality $<$ $>$ \leq \geq

boundary (open or closed)

test point (shade where the test point is TRUE)

whiteboards



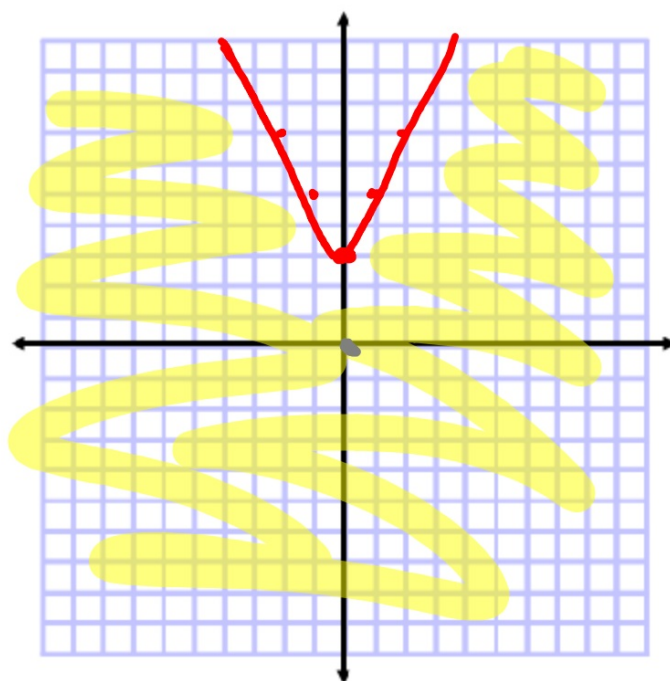
Guided Practice



3A. Graph $y \leq 2|x| + 3$.

$$0 \leq 0 + 3$$

$$0 \leq 3$$



3B. Graph $0 \geq 3|0 + 1|$.

$$0 \geq 3|1|$$

$$0 \geq 3$$

