

Algebra 1

5.5

Solve and graph absolute value inequalities

inequality

absolute value

less than

greater than

number line & distance

whiteboards

distance  
from zero

bubble

$$|3| \rightarrow 3$$

$$|-3| \rightarrow 3$$

Gr. 6-7 standard

Quiz 5.3-5.4

$$|??| = 5$$

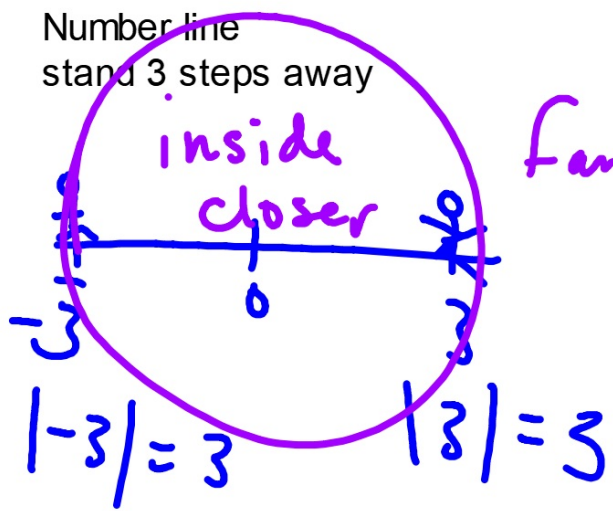


$$|s| = 5$$

$$|-s| = 5$$

absolute value = distance (from zero)

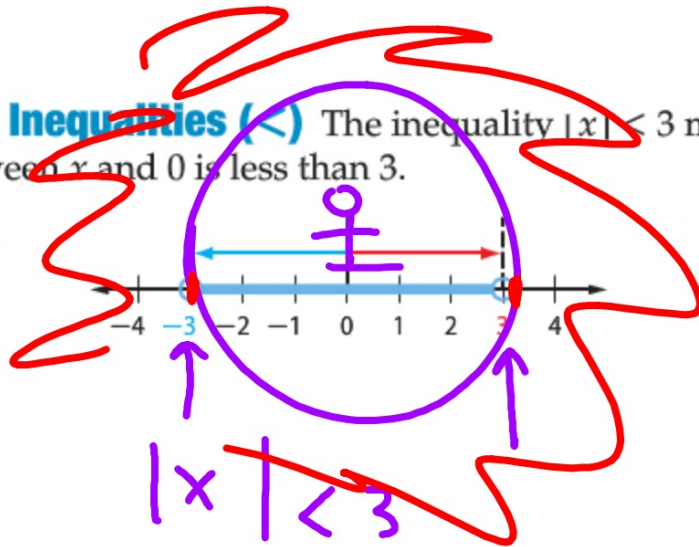
Number line  
stand 3 steps away



Where is 3 away?  
Where is closer than 3?  
Where is farther than 3?

**1 Absolute Value Inequalities (<)** The inequality  $|x| < 3$  means that the distance between  $x$  and 0 is less than 3.

$$|x| > 3$$



$$| \quad | = 5$$

$$| \quad | = 8$$

$$| \quad | = 13$$

$$| \quad | = -2$$

### Example 1 Solve Absolute Value Inequalities (<)

Solve each inequality. Then graph the solution set.

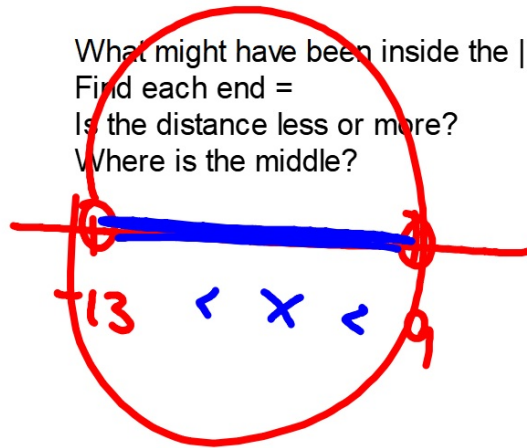
a.  $|m + 2| < 11$

Distance = 11

$$\begin{array}{r} m+2 = -11 \\ -2 \quad -2 \\ \hline m = -13 \end{array}$$

$$\begin{array}{r} m+2 = 11 \\ -2 \quad -2 \\ \hline m = 9 \end{array}$$

What might have been inside the | | originally?  
Find each end =  
Is the distance less or more?  
Where is the middle?



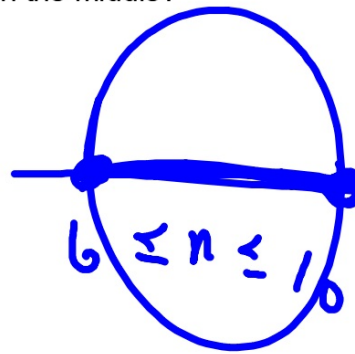
Guided Practice

1A.  $|n - 8| \leq 2$



$$\begin{array}{r} n - 8 = -2 \\ + 8 \quad + 8 \\ \hline n = 6 \end{array}$$

$$\begin{array}{r} n - 8 = 2 \\ + 8 \quad + 8 \\ \hline n = 10 \end{array}$$



WB  
SK.  
1-3  
7-12

What could have been inside?  
Find each end  
Is the distance less or more?  
What is in the middle?

b.  $\square \mid \square - 2$

What could have been inside? :(  
Find each end  
Is the distance less or more?  
What is in the middle?





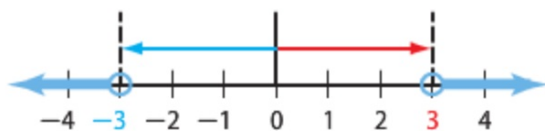
 **Real-World Example 2** Apply Absolute Value Inequalities

**INTERNET** A recent survey showed that 65% of young adults watched online video clips. The margin of error was within 3 percentage points. Find the range of young adults who use video sharing sites.

### Guided Practice

- CHEMISTRY** The melting point of ice is  $0^{\circ}\text{C}$ . During a chemistry experiment, Jill observed ice melting within  $2^{\circ}\text{C}$  of this measurement. Write the range of temperatures that Jill observed.

**2 Absolute Value Inequalities ( $>$ )** The inequality  $|x| > 3$  means that the distance between  $x$  and 0 is greater than 3.



**Example 3 Solve Absolute Value Inequalities (>)**

Solve  $|\square| > \square 12$ . Then graph the solution set.

distance = 12

What could have been inside?  
Find each end  
Is the distance less or more?  
What is in the middle?

**Solve each inequality. Then graph**

3A.  $| \square | \square 7$

What could have been inside?  
Find each end  
Is the distance less or more?  
What is in the middle?

3B.  $\square - \square = 5$

What could have been inside? :(  
Find each end  
Is the distance less or more?  
What is in the middle?