

p. 469 Sl. since 2000

$$N = t^2 + 1.5t + 0.5$$

Alg 1B

8.2 Multiply monomials

Quiz 8.1-8.2

ICE WS

$$a) N = 5^2 + 1.5(5) + 0.5$$

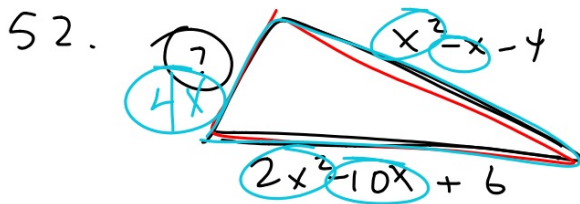
$$= 25 + 7.5 + .5$$

$$= 33 \rightarrow 3,300$$

$$b) N = 7^2 + 1.5(7) + 0.5$$

$$= 49 + 10.5 + .5$$

$$= 60 \rightarrow 6,000$$



$$p = 3x^2 - 7x + 2$$

$$3x^2 - 7x + 2 = \underline{2x^2 - 10x + 6} + \underline{x^2 - x - 4} + ?$$

$$\begin{array}{r} 3x^2 - 7x + 2 = 3x^2 - 11x + 2 + ? \\ -3x^2 + 11x - 2 \quad -3x^2 + 11x - 2 \\ \hline 4x = ? \end{array}$$