

Basic Alg 1.7

Construct and interpret line graphs,

Construct and interpret histograms, and stem-and-leaf plots

line graph

histogram

cumulative frequency histogram

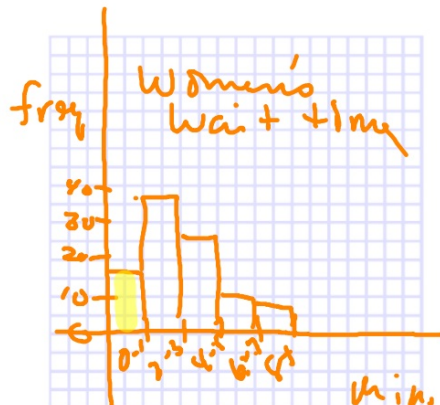
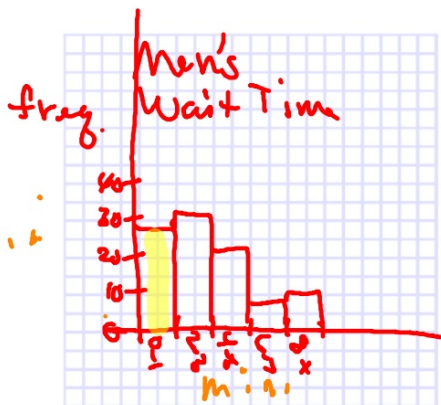
stem and leaf plot

In a survey, men and women were asked how long they were willing to stay on hold when calling a customer service representative about a product they purchased. The results are shown in the table at the right.

How Long on Hold?		
Time (min)	Percent of Men	Percent of Women
0-1	28	18
2-3	32	36
4-5	23	27
6-7	7	10
8+	10	9

Source: Bruskin/Goldring for Inference

15. Make a histogram showing the men's responses.
16. Make a histogram showing the women's responses.
17. How do your histograms compare?
18. Who do you think would hang up the phone sooner, men or women?



19. **Sports** Danny stayed late after every basketball practice to shoot 5 free throws. The chart shows how many free throws he made out of 5 for each night of practice.

Free Throws (out of 5)			
1	4	0	2
1	3	3	2
4	3	3	2
5	3	2	2
1	0	4	3

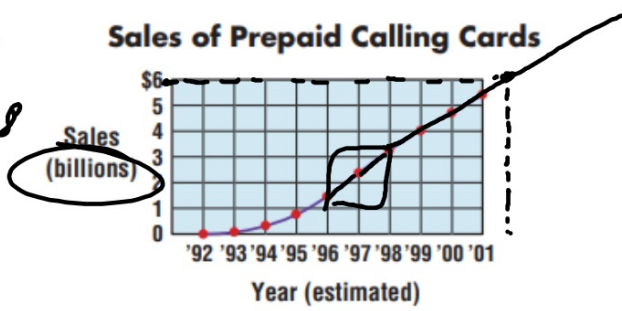
- Make a frequency table to organize the data.
- If Danny has basketball practice 5 days a week, how many weeks did he stay late, shooting free throws? *20 days*
- What number of free throws did he make most often? *3*
- How many times did he not make any free throws? *2*
- How many times did he make all 5 free throws? *1*

# made	freq.
0	2
1	3
2	7
3	7
4	3
5	1

20. **Communication** The line graph shows the growth in sales of prepaid calling cards.

96/97 97/98

- a. Between which two years was growth in sales the greatest?
- b. Predict the number of sales for the year 2002.



Source: Atlantic ACAA

\$
6 billion

P. 42
16-28 e