

Algebra 1 1.5

Solve equations with one variable.

Solve equations with two variables.

open sentence

equation

solution

replacement set

element

solution set

.

ICE problems (due at 3:30)

1. 1.5 hr
48.00 parts
\$40 per hour

$$48 + (40) + (20) = t$$
$$108 = t$$

$$48 + 1.5(40) = t$$
$$48 + 60 =$$

a. 30 lbs

$$2.99 + .85lb$$

$$2.99 + .85(30) = c$$

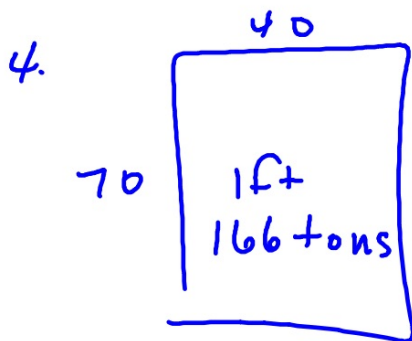
$$2.99 + 25.50 = c$$

$$28.49 = c$$

$$3. \quad 1088 \text{ ft/s} \quad 8 \text{ sec}$$

$$1088 \cdot 8 = d$$

$$8704 = d$$



\$11/ton
\$3

$$166(11+3) = c$$

$$166(14) = c$$

$$166 \cdot 11 + 3 \cdot 166 = c \quad 2324 = c$$

$$1826 + 498 = c$$

$$2324 = c$$

p. 30
1-18 by 3:30