

Algebra 1 3.1

Identify linear equations, intercepts, and zeros

Graph linear equations

integer

linear equation

~~standard form~~

constant 6

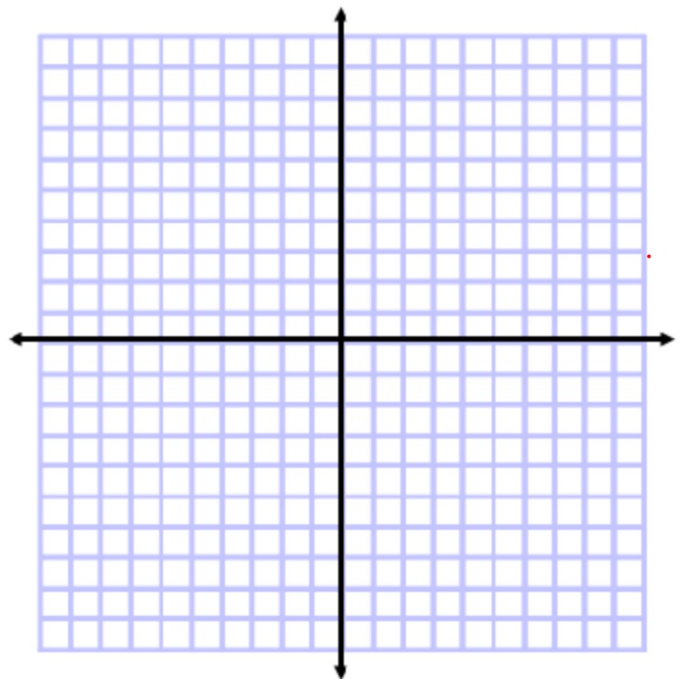
variable

x-intercept -

y-intercept -

whiteboards

no power
x, y
x in denom.



Graphing: Use x and y-intercepts, or TOV

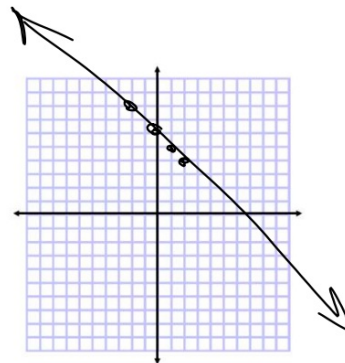
$$2x + 3y = 6$$

$$3x - 5y = 15$$

$$-2x + 8y = 32$$

	x	-x + 6	
y = -x + 6	2	-2 + 6	4
	0	-0 + 6	6
y = -2x + 2	-2	-(-2) + 6	8
	1	-1 + 6	5

$$y = 1/2x - 5$$



Matching activity

