

Algebra 1

Write an equation

Write an equation

linear

slope $m =$

constant of variation

y-intercept

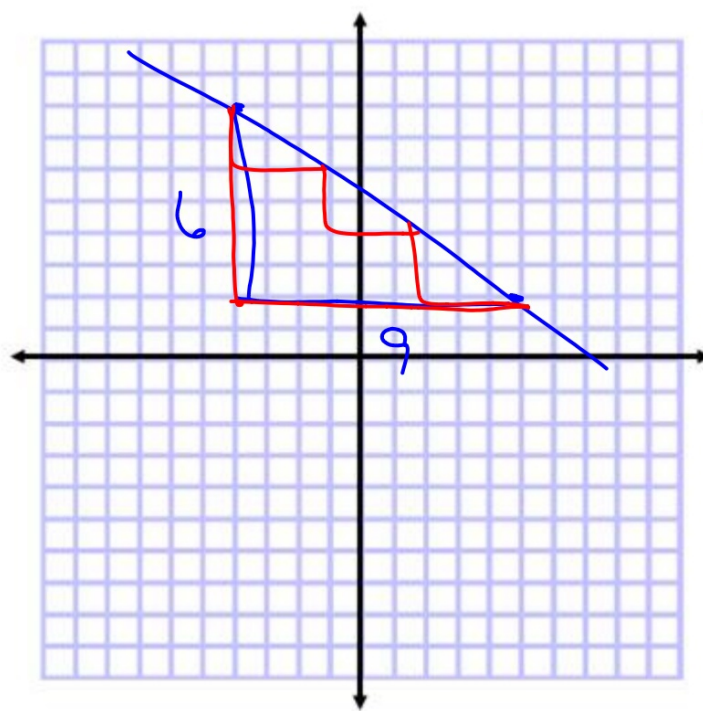
directly proportional

proportional

nonproportional

whiteboards()

$(0,0) \quad y=kx$

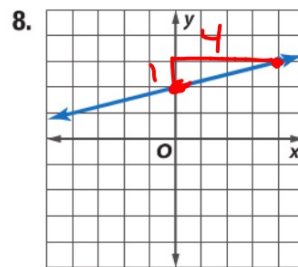
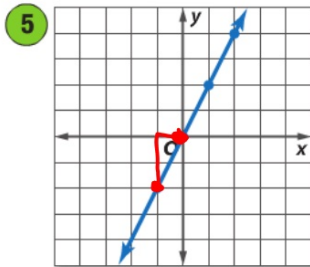


$$\frac{-6}{9} = -\frac{2}{3}$$

Key Concept Proportional Relationship

Words $f(x) = 2x$ A relationship is proportional if its equation is of the form $y = kx$, $k \neq 0$. The graph passes through $(0, 0)$.

$$y = \frac{2}{1}x + 0$$



$$y = \frac{1}{4}x + 2$$

$$f(x) = \frac{1}{4}x + 2$$

In-class practice WS:
due at end of class

→ Quiz Mon. 3.5-3.6
Test Wed. Ch. 3

