

Algebra 1 3.6

Write an equation for a proportional relationship

Write an equation for a nonproportional relationship

linear

slope

constant of variation

y-intercept

directly proportional

proportional

nonproportional

whiteboards(?)

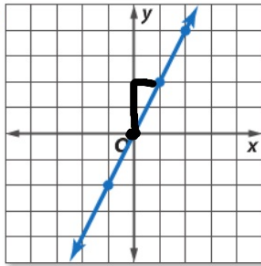
 **KeyConcept** Proportional Relationship

Words

A relationship is proportional if its equation is of the form $y = kx$, $k \neq 0$. The graph passes through $(0, 0)$.

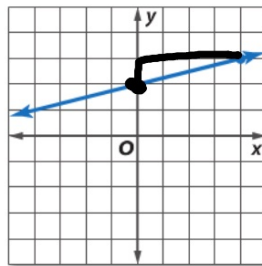
$$y = 2x + 0$$

5



$$f(x) = 2x$$

8.



$$y = \frac{1}{4}x + 2$$

$$f(x) = \frac{1}{4}x + 2$$

In-class practice WS:
due at end of class

Quiz Fri. 3.5-3.6
Test Mon Ch. 3

