

Algebra 1 4.1

Write and graph linear equations in slope-intercept form.

$$y = mx + b$$

Model data with equations in slope-intercept form

linear

slope

y-intercept

$$y = mx + b$$

constant function (horizontal)

bicycles and constant slope

Matching activ. (if time)

Whiteboards

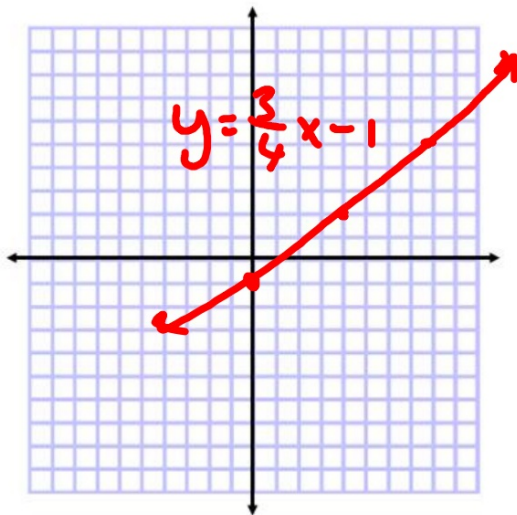
Whiteboards

3. slope: $\frac{3}{4}$, y-intercept: -1

4. slope: $-\frac{5}{7}$, y-intercept: $-\frac{2}{3}$

$$y = mx + B$$

$$y = \frac{3}{4}x - 1$$



Does it say $y =$? (not yet)

Guided Practice

$$y = mx + B$$

Graph each equation.

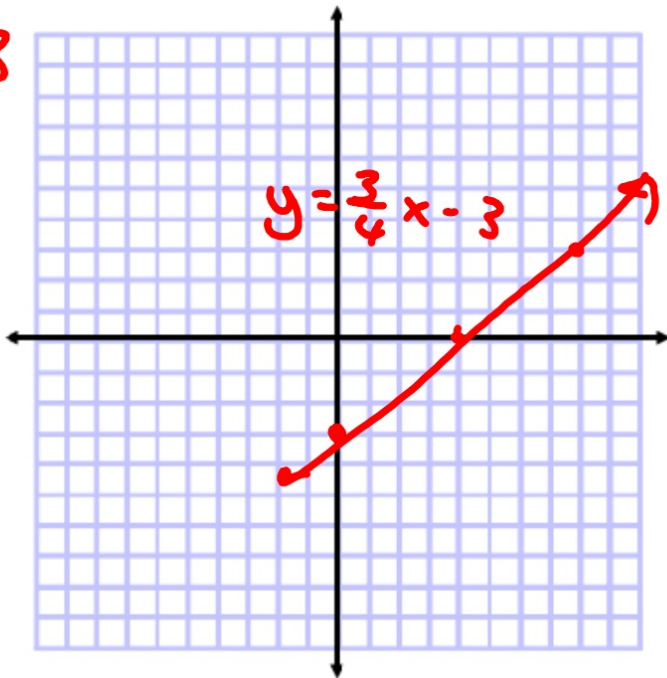
2A. $3x - 4y = 12$

$$\begin{array}{r} -3x \qquad -2x \\ \hline \end{array}$$

$$\begin{array}{r} -4y = \frac{-3x+12}{-4} \\ \hline y = \frac{-3x+12}{-4} \end{array}$$

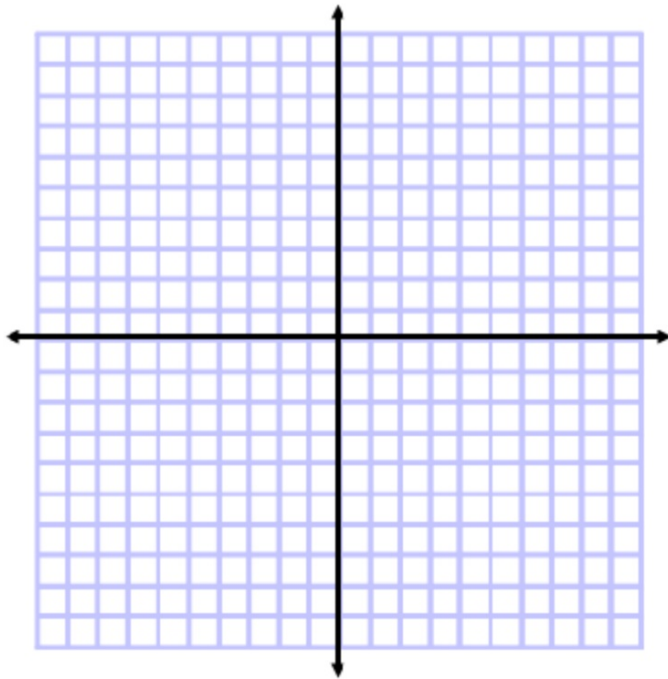
$$y = \frac{3}{4}x - 3$$

2B. $-2x + 5y = 10$



5. $-4x + y = 2$

6. $2x + y = -6$



Guided Practice

Graph each equation.

3A. $y = 5$

$$\begin{array}{c|c} x & y \\ \hline -2 & 5 \\ -1 & 5 \\ 0 & 5 \\ 1 & 5 \end{array}$$

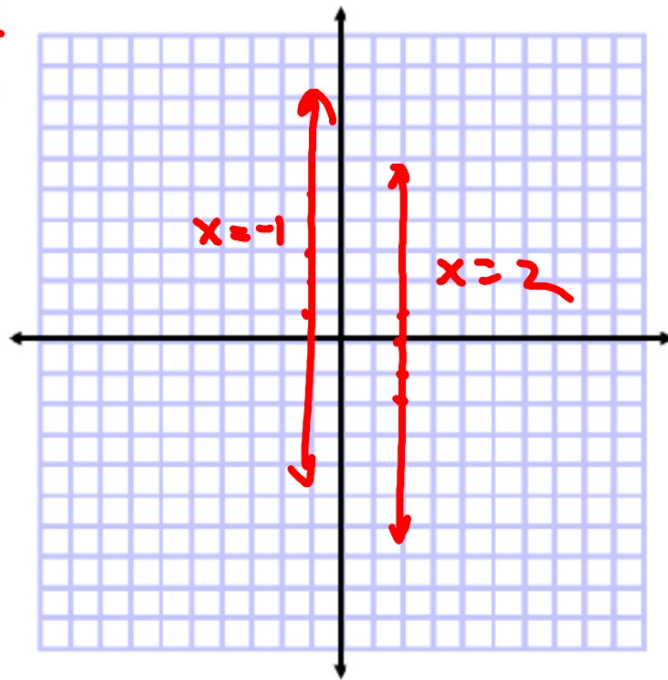
Special cases:

vertical

$y = \text{number}$ horiz

$$\begin{array}{c|c} x = 2 & 2 \\ \hline y = -4 & 2 \\ x = -1 & 2 \\ & 2 \\ & 1 \end{array}$$

$$\begin{array}{c|c} -1 & 3 \\ \hline -1 & 1 \\ -1 & 2 \\ -1 & 5 \end{array}$$



Where do they start (B)? What is the rate of change (m)?

Real-World Example 5 Write and Graph a Linear Equation



SPORTS Use the information at the left about high school sports.

a. Write a linear equation to find the number of girls in high school sports after 1997.

Real-World Link
 In 1997, about 2.6 million girls competed in high school sports. The number of girls competing in high school sports has increased by an average of 0.06 million per year since 1997.

Source: National Federation of High School Associations

$$y = mx + B$$

$$y = 0.06x + 2.6$$

b. Graph the equation.

$$= 0.06 \cdot 20 + 2.6$$

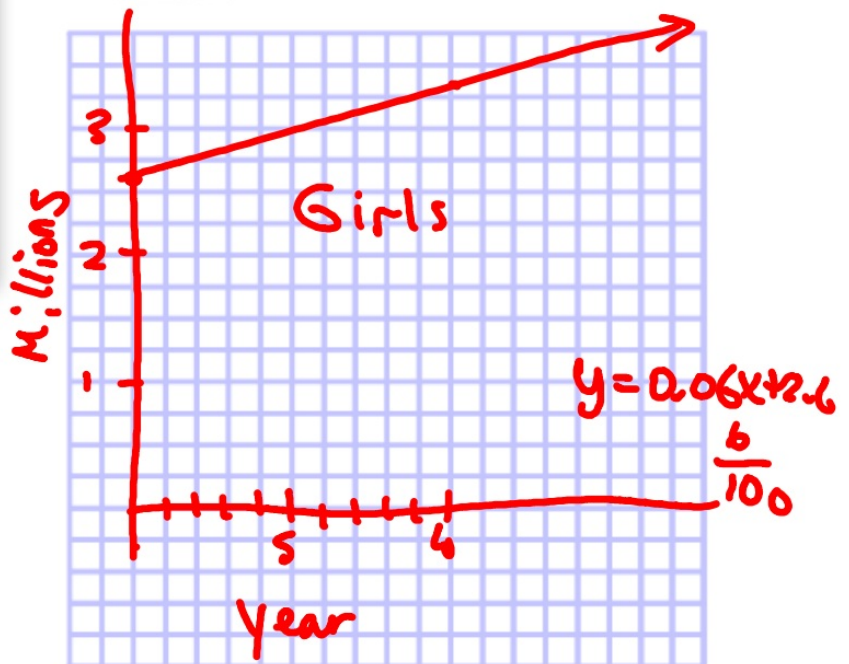
$$= 1.2 + 2.6$$

$$= 3.8 \text{ mill}$$

c. Estimate the number of girls competing in 2017.

m
Slope

$$\frac{-6}{10} \quad \frac{60}{1000}$$



Guided Practice

5. **FUNDRAISERS** The band boosters are selling sandwiches for \$5 each. They bought \$1160 in ingredients.

A. Write an equation for the profit P made on n sandwiches.

B. Graph the equation.

C. Find the total profit if 1400 sandwiches are sold.

When do they make a profit?

